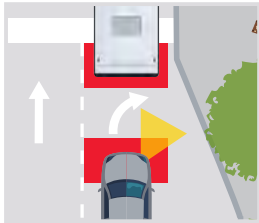


BUS LANES

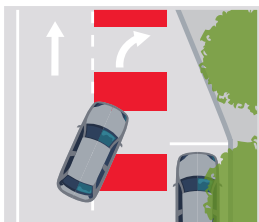
DO



check your mirrors and **yield to buses** before entering the bus lane



use your right turn signal when entering and using the bus lane for authorized turns



enter the bus lane where it is dashed before your turn



use the bus lane to turn right, when entering or exiting a driveway, or when accessing a designated parking spot

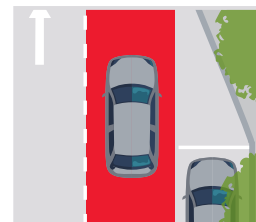
DON'T



pull in front of a bus, even if it is stopped



enter the bus lane where it is solid, except to access a parking spot



drive in the bus lane for multiple blocks



park, load, or stop in a bus lane during unauthorized days/hours